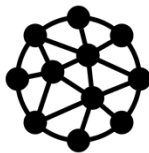


T3 Smart Air Purifier A1

T3-Smart-511



Intelligent control



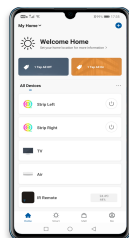
Technology design



Control
by Application



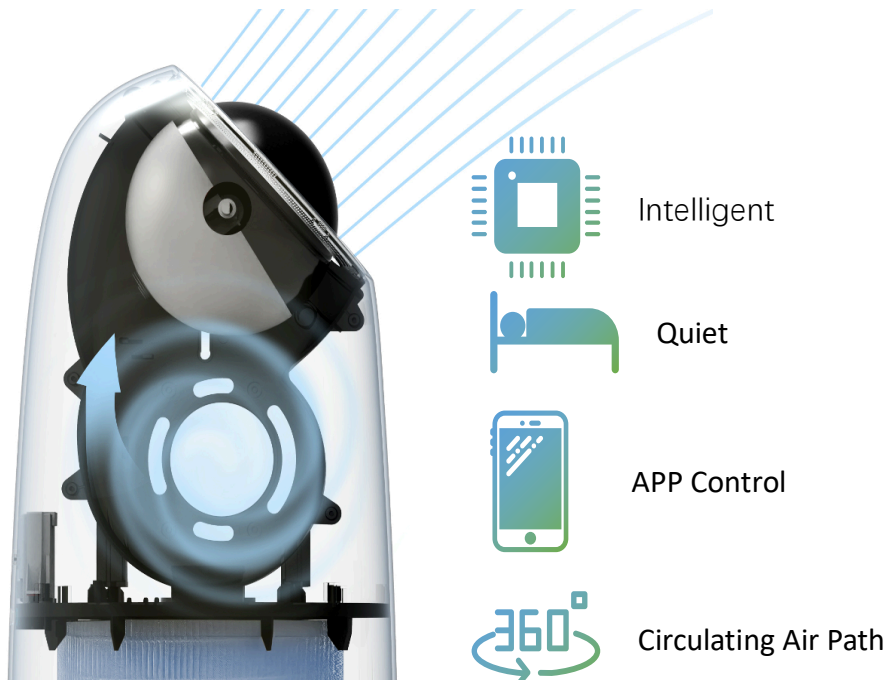
HEPA Filter



download
T3 Smart App

◇ Smart Air Purifier

T3 Smart Air Purifier A1 is automatic detection of air quality and control air volume. The Display digital shows the quality of air through smiley face and eye value. You can use this Air Purifier to decorate your home. With a cute appearance and modern will make your home more beautiful with fresh air. In additional, this product is light and small so you can put on the table or beside your bed or your work desk to eliminate pollution and dust. Moreover, it is easy to control on T3 Smart application.



◇ Easy to Use



1. Touch the power button to Turn-On the device



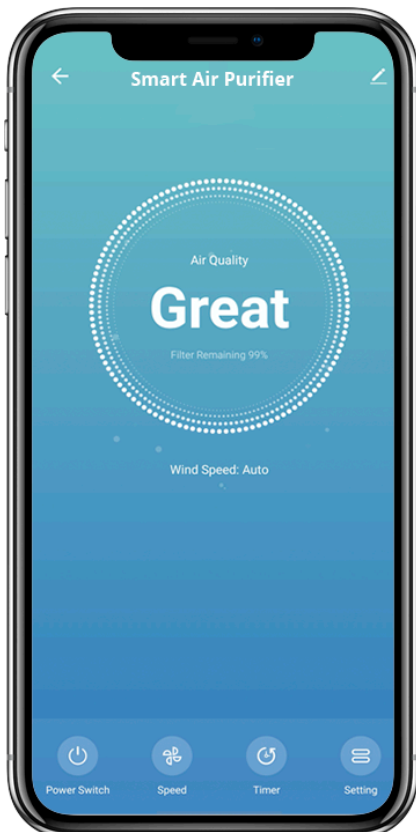
2. Touch the middle of eyes to Turn-Off the device



3. Scrolling the ball angle to adjust the fan speed



4. Long press the middle of eyes when the eyes flashing to connect the T3 Smart APP



You can connect Smart Air Purifier A1 to T3 Smart Application to control whenever and wherever you want. On/Off, Speed of airflow, Timer setting and see the quality of the air on display screen. Control your smart Air Purifier A1 is just on your fingers.

◇ Specification

| Air Purifier | |
|---------------------------|--|
| ABS material | control panel bracket 、 spherical shell、 outer shell、 volute casing 1、 volute casing 2、 module bracket、 middle bracket、 inlet cover、 bottom cover、 panel bracket |
| PC material | spherical shell II |
| Function | Auto/Manual mode |
| Filter Material | Primary filter + activated carbon granules + HEPA |
| Filter life | 2,200 hrs. |
| Product dimension | L225* W225* H459 mm |
| Rated Input Voltage | 110-130V 50/60Hz 220-240V 50/60Hz |
| Input&output introduction | |
| Rated Voltage | 110-130V 50/60Hz 220-240V 50/60Hz |
| Rated Power | 26W |
| Environment condition | |
| Working temperature | -10°C to 50°C |
| Storage temperature | -10°C to 70°C with shell (With Case) |
| Relative humidity | 5% to 100%RH |
| Transportation | IEC 721-3-2 2M2 5-9Hz,A=3.5mm 9~200Hz,Acceleration=5m/S ² 200~500Hz,Acceleration=15m/S ² |

Remark: The plug can be compatible with the electrical system of Thailand without a converter.

| Power supply noise | |
|----------------------------------|--|
| Pulse voltage | 1500V |
| Pulse width | 1 μ s and subhedral wave of 50 ns |
| Pulse repetition period | synchronize with power supply |
| Voltage polarity | Anode(+), Cathode(-) |
| Phase angle | 0 ~ 360° |
| Rise time | 1 ns |
| Lightning test | |
| Pulse voltage | 5kV between power wire 10kV between power wire and machine body |
| Voltage wave | rising time 1.2 μ s, dropping time : 50 μ s |
| Current wave | rising time 8 μ s, dropping time: 20 μ s |
| Voltage polarity | Anode(+), Cathode(-) |
| Test times | no abnormality per three times |
| Instantaneous power down | |
| Interrupt time | 0.05s, 0.5s, 2MIN |
| Test times | 10 times repeatedly |
| Fluctuation of transient voltage | |
| Fluctuation time | 0.2s, in 2s rated voltage 의 50% |
| Test times | 10 times repeatedly |

| Static endurance | |
|------------------------------|---|
| Discharge test | normal |
| Test voltage | 15000V |
| Power cut capacitance volume | 150pF |
| Discharge resistance | 33Ω |
| Rising time | 0.7 ~ 1nS |
| Voltage polarity | anode(+) , cathode(-) |
| Ambient temperature | 25 ±5°C |
| Humidity | under 30%(RH) |
| Test times | 3 times |
| Structural parameter: | |
| Clean air volume | CADR≥ 100m ³ /H |
| Coverage area | <11 |
| Machine life | 3-5 years |
| Noise | High mode: 50±3dB Mid mode: 45±3dB Low mode: 30±3dB |
| Motor Speed | High grade: 1700 rpm±10% Mid grade: 1050 rpm±10% Low grade: 850 rpm±10% |

◇ Package Content

Air purifier A1*1

HEPA Filter*1

Adapter*1

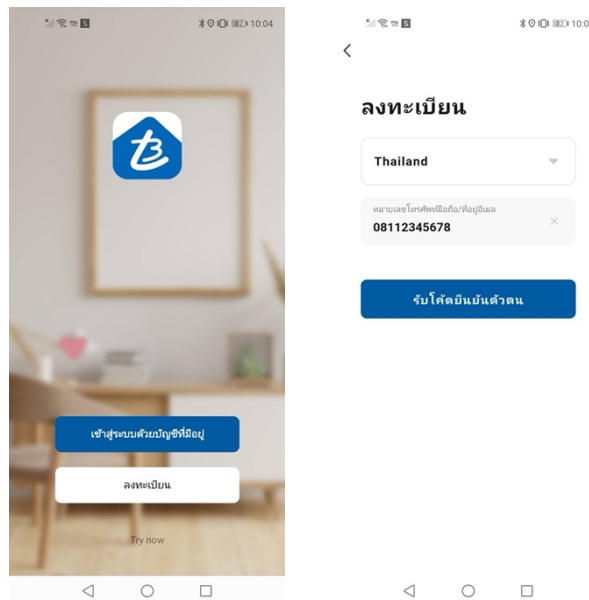
User manual*1

◇ How to connect product with Application

1. Use your smartphone to scan QR code, or search “T3 Smart” app in Google Play Store or APP Store to download and install. This Application support android and IOS.



2. Create an account with your mobile number and authentication code.



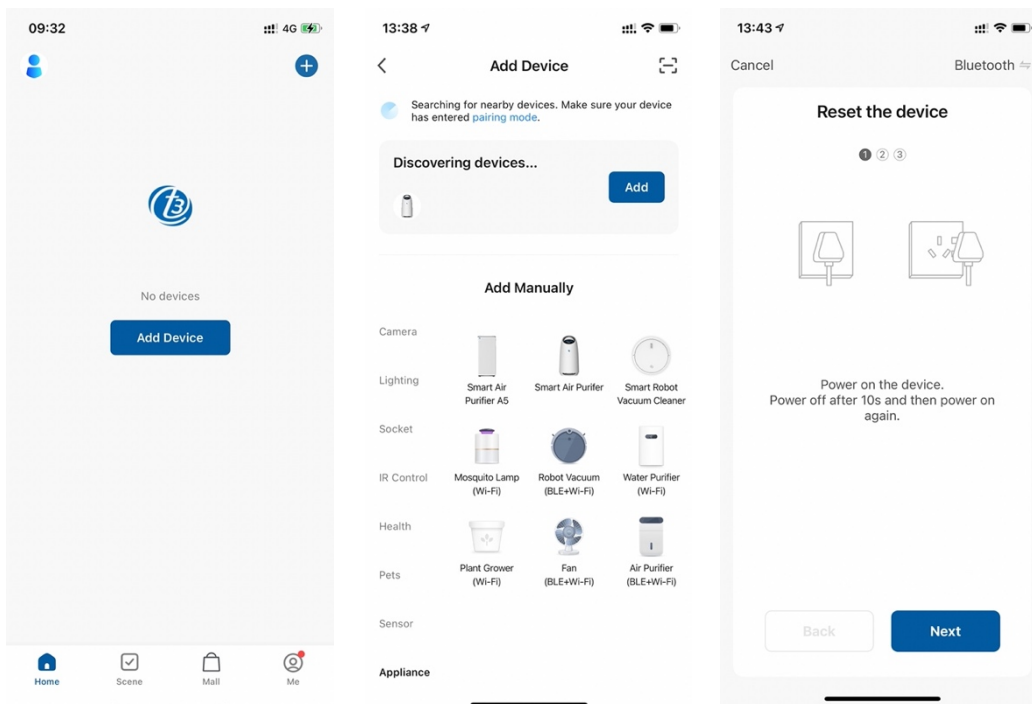
3. Open "T3 Smart "APP, press "+" or "Add Device" in the main screen then click "Appliance" and choose "Smart Air Purifier". The APP will display manual addition and automatic discovery.

1. Automatic discovery: When the corresponding authority is turned on, the device can be automatically discovered, and the device needs to be in the network configuration state and turned on.

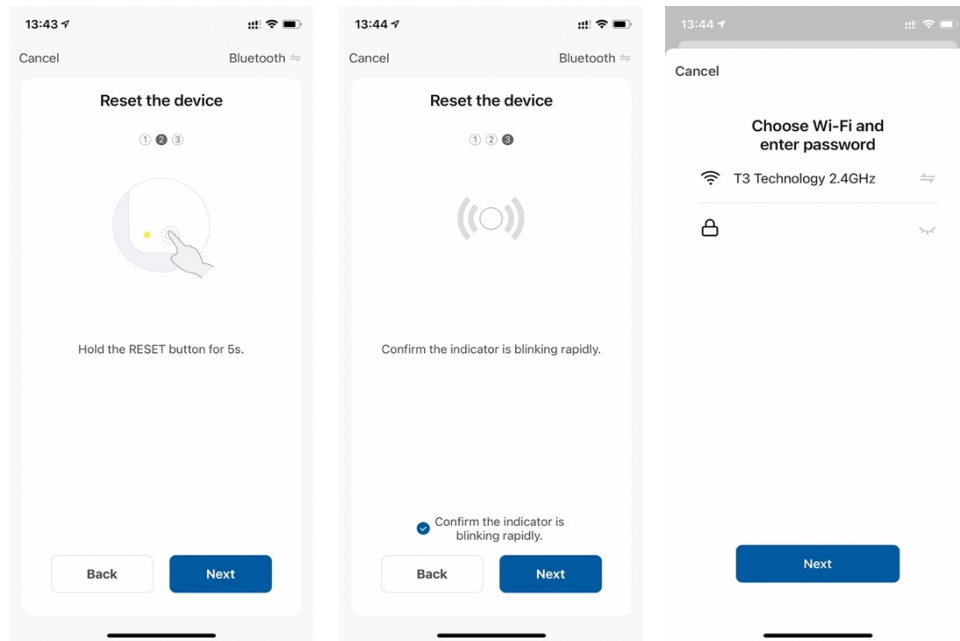
2. Manually add: select the name corresponding to the product.

Bluetooth configuration:

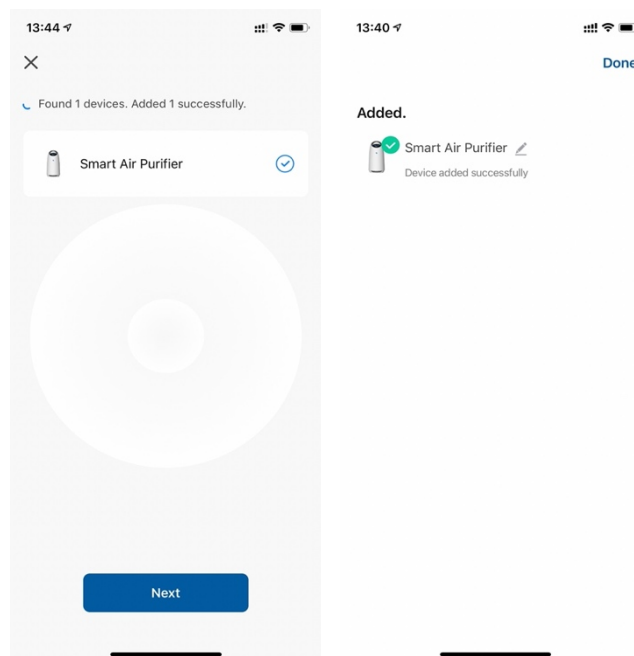
- Press between digital display of air purifier to open wi-fi. When confirming that the Wi-Fi indicator of the device is flashing quickly then follow instruction on the Application.



- Please make sure that you choose wi-fi 2.4GHz and fill the correct Wi-Fi passwords then press next.



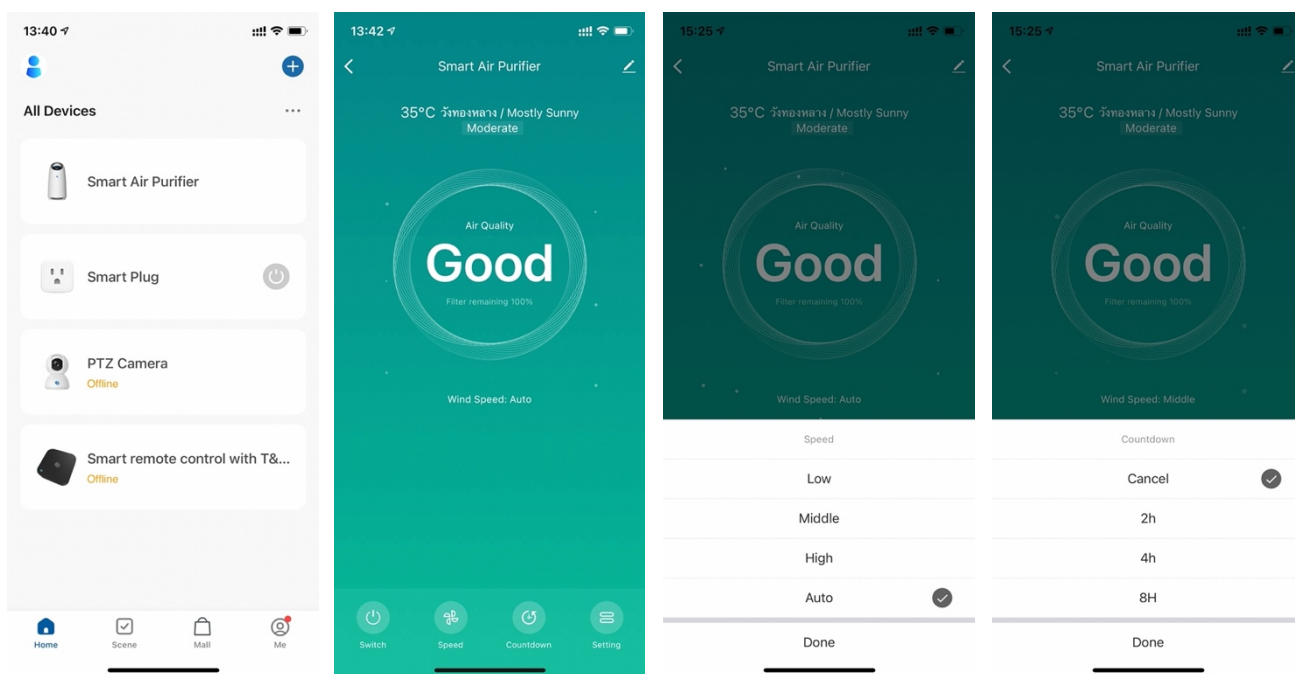
- Once the configuration is completed, the display light on Air purifier will stop flashing and the device will be added to the device list.



◇ How to use Application

Now you can control the Smart Air purifier A1 through T3 Smart APP. Smart Air purifier A1 will be on Device List.

- Tap “Smart Air Purifier” icon to control it on Application.



You can switch on/off, adjust speed, set countdown time and setting Smart Air Purifier. If you want to make schedule, you can find this function in setting.