

Smart Remote Control With Temperature & Humidity Sensor

USER MANUAL



Model: T3-Smart-301

Thanks for choosing our product !

Say goodbye to use remote controls for each of the IR home appliances such as TV, Air-conditioner , TV box, light, Fan, Audio, etc. You can remotely control these devices with the tap of your finger on the mobile App, Also you can real-time monitor the temperature and humidity on App at anytime and anywhere.

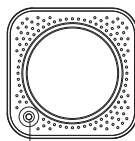
Please kindly read the user manual carefully before usage and keep it for future reference.

Product Presentation:



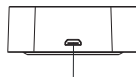
LED Indicator

Front Side



Reset Button

Back Side



Micro Input port

Note: please place it like the front side when use.

Product Specification

Size: 60*60*20mm

Micro Input: DC 5V/1A

LED Indicator: Blue

Infrared Frequency: 38KHz

Infrared Range: ≤10 Meters

Wi-Fi Protocol: 2.4GHz

Wi-Fi Standard: IEEE 802.11 b/g/n

Temperature Measure Range: 0 °C ~ 80 °C

Temperature Accuracy: ± 1 °C

Humidity Measure Range: 0% RH~99% RH

Humidity Accuracy: $\pm 5\%$ RH

Checklist before using the device:

- a. Your smartphone has connected to a 2.4GHz Wi-Fi network.
- b. You have input the correct Wi-Fi password.
- c. Your smartphone must be Android 4.4 + or iOS 8.0 +.
- d. Your Wi-Fi router is MAC-open.
- e. If the numbers of devices connected to the Wi-Fi router reach the limit, you can try to disable a device to cavate the channel or try with another Wi-Fi router.

How to set up:

1. Use your smartphone to scan QR code, or search "T3 Smart" app in Google Play Store or APP Store to download and install.



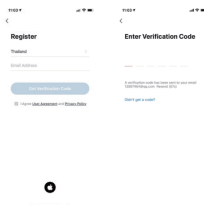
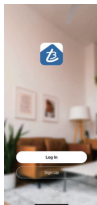
QR Code



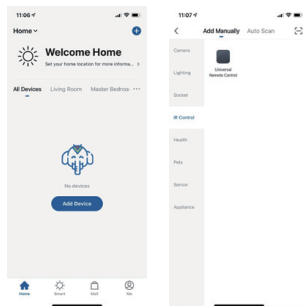
T3 Smart



2. Create an account with your mobile number and authentication code.

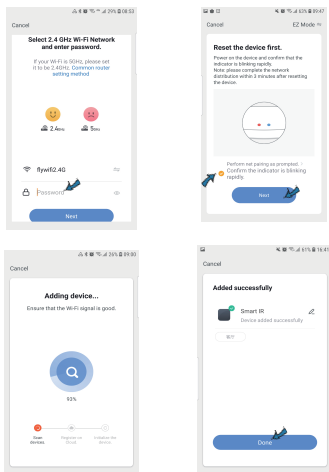


3. Connect your mobile to your Wi-Fi router, click "+" in the upper right corner of homepage or click "Add Device", then select "Universal Remote Control" from "Other".

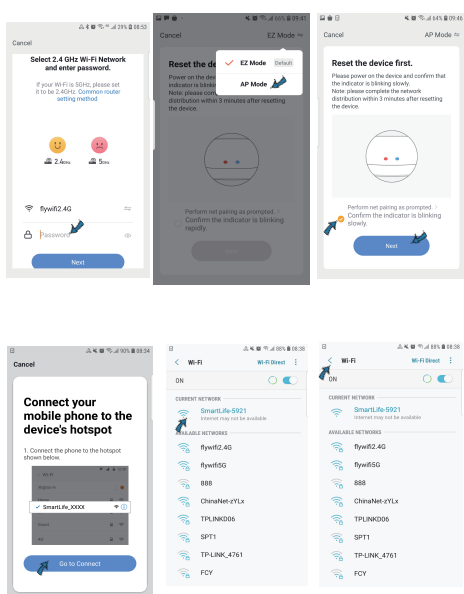


4. Supply power to IR remote control with supplied Micro cable,

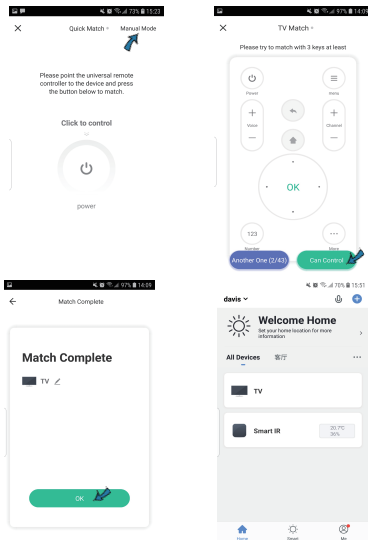
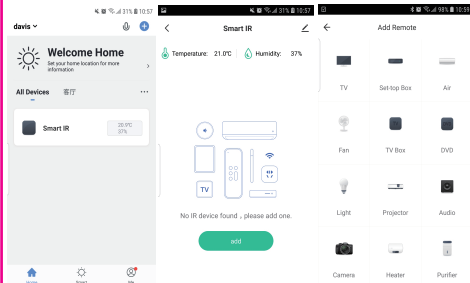
1) If your Wi-Fi router only open **2.4GHz**, enter the Wi-Fi password, if the LED indicator is not blinking rapidly, hold the reset button for about 5 seconds till indicator blink quickly, it will connect to Wi-Fi network automatically. After configuration done, add the IR devices you want to control.



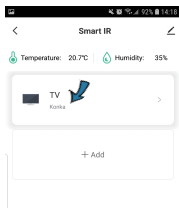
2) If your Wi-Fi router open both 2.4GHz and 5GHz with the same name, enter Wi-Fi password, please select "AP Mode", hold the reset button for about 5 seconds till LED indicator blink slowly, connect your mobile to the device's hotspot: "SmartLife-XXXX" , then click to return to App interface, it will connect to Wi-Fi router automatically, configuration complete.



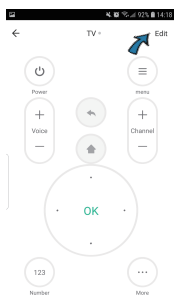
5. Tap "Smart IR", then click "Add ", select the device and its brand you need control, you can click "Quick Match" or " Manual Mode" to match the buttons, please match at least 3 buttons to check if the device reacts properly, if yes, then match completed, you can control the device. If you added the same device type with the same brand in one room, please edit the device with different names to avoid control confusion.



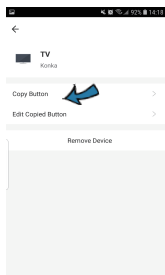
6. If a remote control for an electric device can not be found in the existing brand library, you can copy the buttons and enable them to control the devices. It supports TV,TV box,Set-top box ,fan, etc.



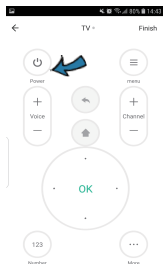
Step 1



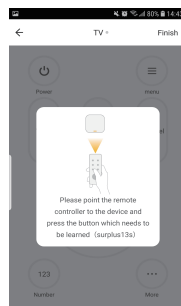
Step 2



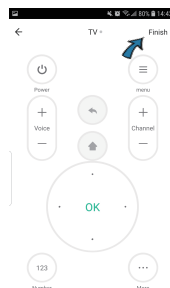
Step 3



Step 4



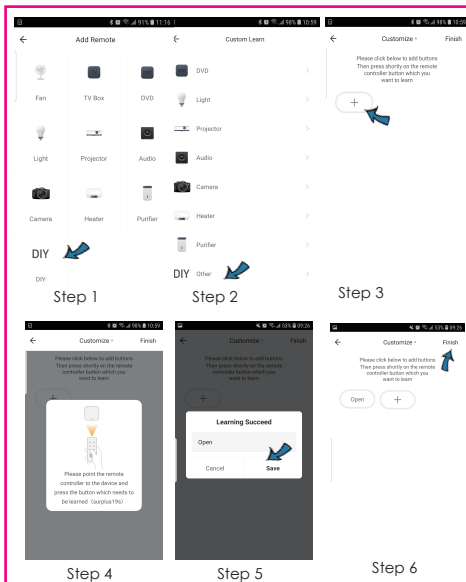
Step 5



Step 6

7. After a button is copied successfully, press it to check whether it works properly, you can choose to click "Finish" or continue to copy other buttons.

8. If you can not find the brand of the device in the brand list, you can choose "DIY" to learn the buttons of other brands' remote control, so you can also control the device.



9. You can click "+" to continue to copy other buttons or click "Finish"

-13-

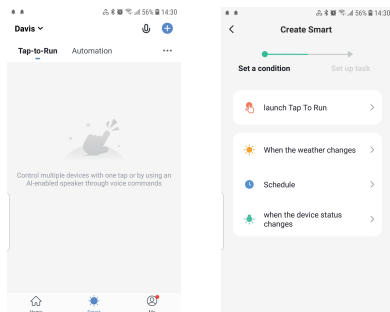
Notes:

1. It only support 38KHz frequency, if the IR remote unable to receive commands from the IR device, it is likely that the frequency of IR device does not match, unable to study commands.
2. DIY does not support voice control.

Functions

1. Customize Scenario

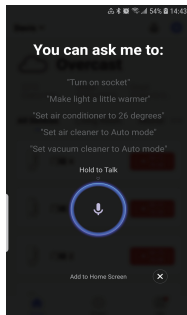
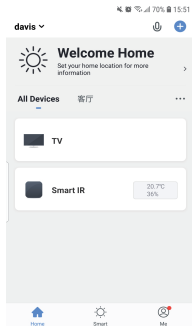
Create smart scenario for IR devices, click " Smart " page, then click" +" at the upper right corner to set conditions and tasks.



-14-

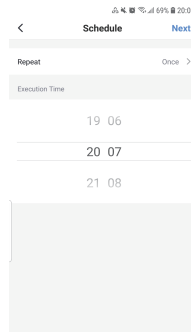
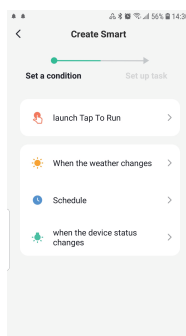
2. Remote control & Voice control

With all-in-one integration, you can control added IR devices remotely wherever you are at anytime on the mobile App. you can also click "🗣️" icon at the upper right corner, hold to speak your control commands for specific devices.



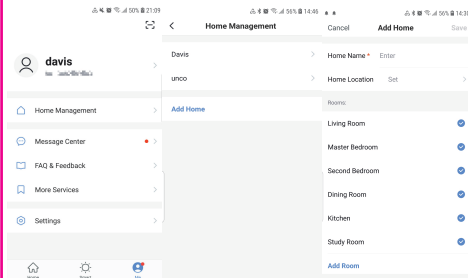
3. Set Schedule

Select "Tap to Run" or "Automation" in "Smart" page, tap "+" to select "Schedule" to set power on/off for specific devices.



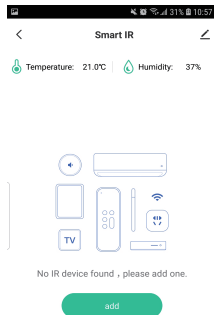
4. Share devices

You can share your added devices with your family members, so they can also control the devices.



5. Monitor Temperature & Humidity

You can real-time monitor the temperature and humidity on the App, and take actions to make some adjustments if necessary.



6. Third-party Voice Control

Works with amazon alexa and google assistant.

FAQ

1. What devices can be controlled with IR remote?

You can control TV, Air-conditioner, Fan, DVD, TV box, Light, Set-top box, Projector, Audio, Camera, Water Heater, Air purifier, etc.

2. What should i do when i cannot control the device with the IR remote ?

Make sure your mobile device and the IR remote is close and connected to the same network, assure the IR remote is always being power supplied.

3. Can i control devices through 2G/3G/4G network?

Both IR remote and mobile device are required to share the same wifi network when adding the IR remote. After configuration done, you can control devices through 2G/3G/4G network. Currently it does not support 5G network.

4. What should i do when device configuration process fail?

You can:

- 1)Check whether IR remote is powered on or not.
- 2)Check whether your mobile phone is connected to 2.4GHz wifi network.
- 3)Check your network connectivity, make sure the router is working properly.
- 4)Make sure the wifi password entered is correct.

5. The IR remote can go through walls or be used to control devices in upstairs/downstairs rooms?

IR can not penetrate walls, so make sure there is no obstacle between IR remote and the IR devices.

6. We have Huawei/Xiaomi set-top box, why is it not connecting?

There are two types of set-top boxes, OTT and IPTV, the most obvious difference is that IPTV supports living streaming while OTT does not. please make sure you have matching TV box before set-up.

7. What should we do when we are unable to use IR remote to control device?

Please check the following:

- 1) IR remote network in good condition (click any keys on the remote control panel in the app and see whether the indicator light starts flashing. if it flashes, it indicates to work properly.
- 2) There are no obstacles or barriers between the IR remote and the electric device .
- 3) The factory remote control of electric device is IR-enabled. (Cover the top of the IR remote with hand or any objects, then press any keys of the remote control, if the device does not response, it is IR based. Otherwise, it is bluetooth or RF based remote control.