

# T3 Smart IR Remote

## Model: S06Pro



**Temperature sensor**



**Humidity sensor**



**Timing control**



**Remote control**



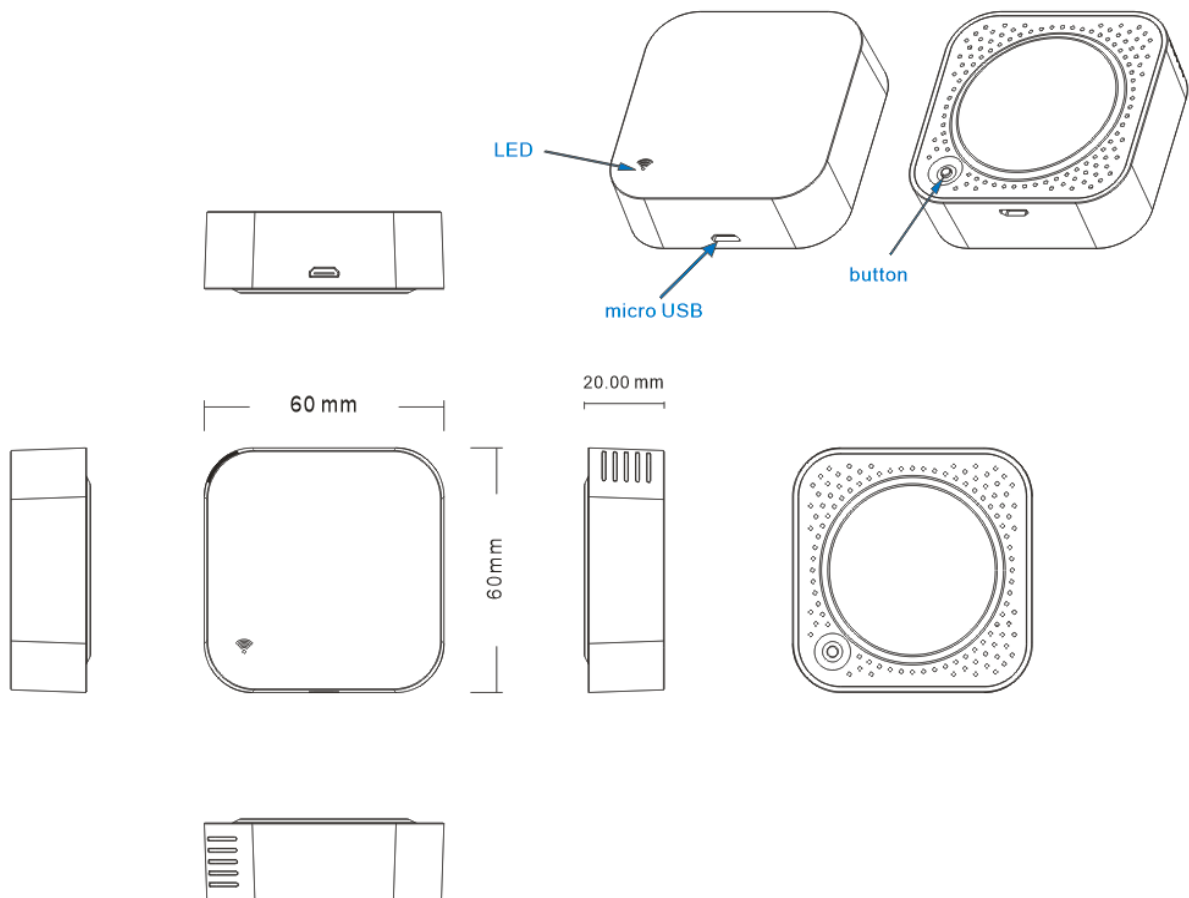
**download  
T3 Smart App**

- ◇ **Appearance:** Exquisite and nice design, compact structure, have applied patent.
- ◇ **Function:** Integrated with temperature and humidity sensing on IR Remote. One product with 3 functions, you can not only remotely control IR-enabled devices but also can monitor the temperature and humidity, real-time know about the environment dynamics.
- ◇ **Accuracy:** Super-accurate temperature and humidity measuring values, can compare with the one of domestic famous brand, even better than it.
- ◇ **Intelligent Link:** When the ambient environment change, you can also execute intelligent link. For instance, when the ambient temperature surpasses 30 degree the air-conditioner open automatically. Or when the ambient humidity lower 20% RH, the humidifier will spray, making your feel comfortable anytime.
- ◇ **Cost:** Combined with 3 functions, yet its cost is half cheaper than that of purchasing IR remote and temperature & humidity sensor separately. It goes beyond its real-value.



## ◆ Specifications

Wifi Remote Control	
Size	L60±0.5*W60±0.5*H20±0.5mm
Infrared Frequency	38 KHz
WiFi Frequency	2.4GHz
LED Indicator	Blue



Input/Output	
Rated Input Voltage	5.0 V
Working Voltage	4.75-5.25V
Input Current	1A Max
Infrared Frequency	38 KHz
WiFi Frequency	2.4GHz
Standby Power	≤0.4W
Infrared Range	≤10M
Temperature measuring range	0°C~60°C
Humidity measuring range	0%RH~99%RH
RF Characteristics	
Working Frequency	2.412~2.484GHz
Wi-Fi Standard	IEEE 802.11b/g/n(Channel 1-14 )
BLE Standard	Low-power BLE 4.2
Data Transfer Rate	11b:1,2,5.5,11(Mbps)
	11g:6,9,12,18,24,36,48,54(Mbps)
	11n:HT20 MCS0~7
Antenna	PCB_On board antenna, gain 1.5dbi

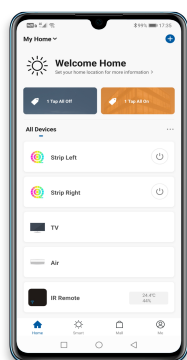
Environmental Requirements	
Working Temperature and Humidity	0°C to +50°C 10%RH to 85%RH
Storage Temperature and Humidity	0°C to +70°C 5%RH to 95%RH non-condensing

## ◇ Package Content

IR remote control\*1  
 USB Type C\*1  
 User manual\*1

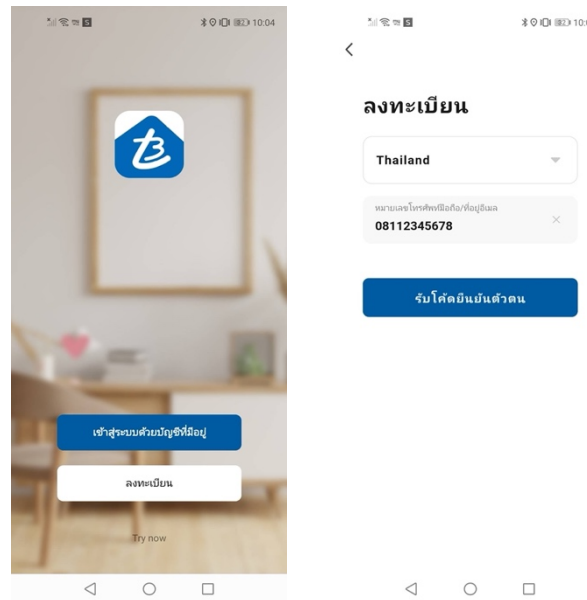
## ◇ How to connect product with Application

1. Use your smartphone to scan QR code, or search “T3 Smart” app in Google Play Store or APP Store to download and install. This Application support android and IOS.

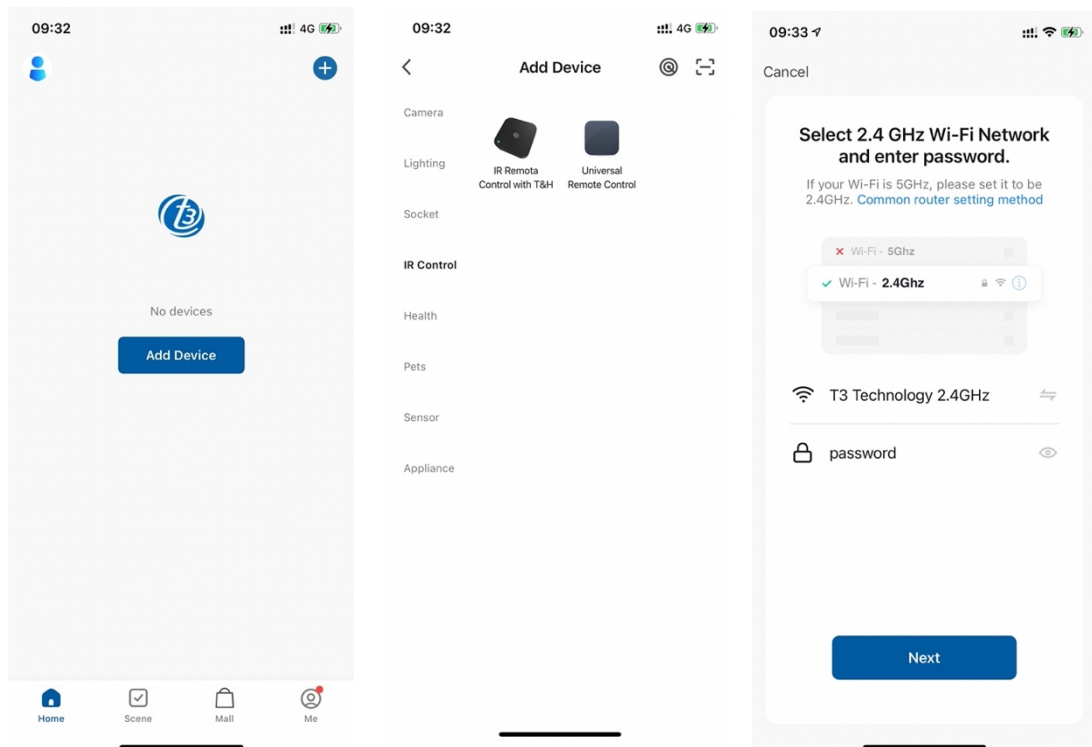


download  
T3 Smart App

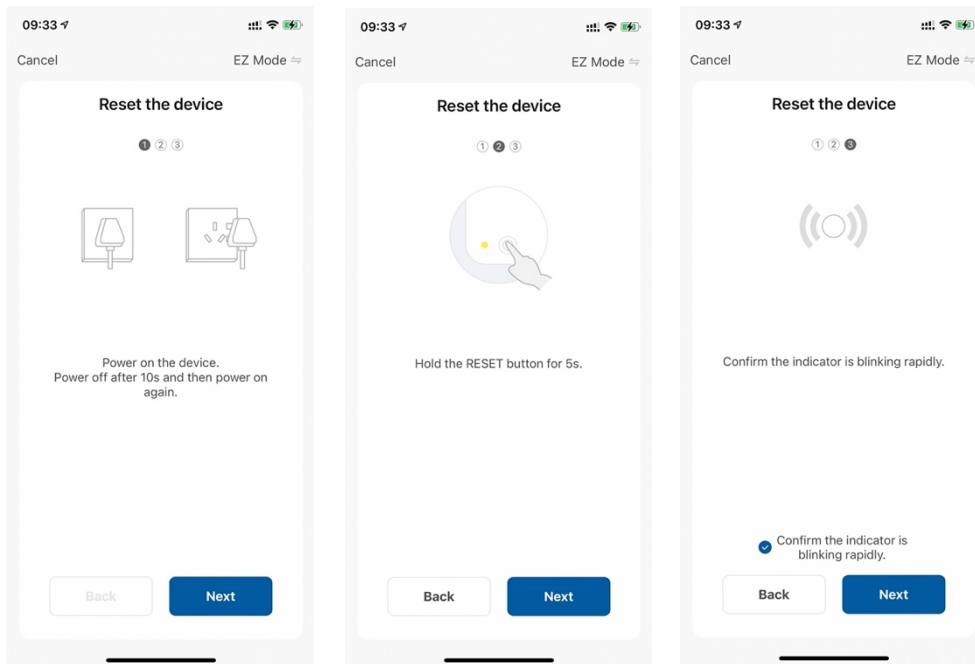
2. Create an account with your mobile number and authentication code.



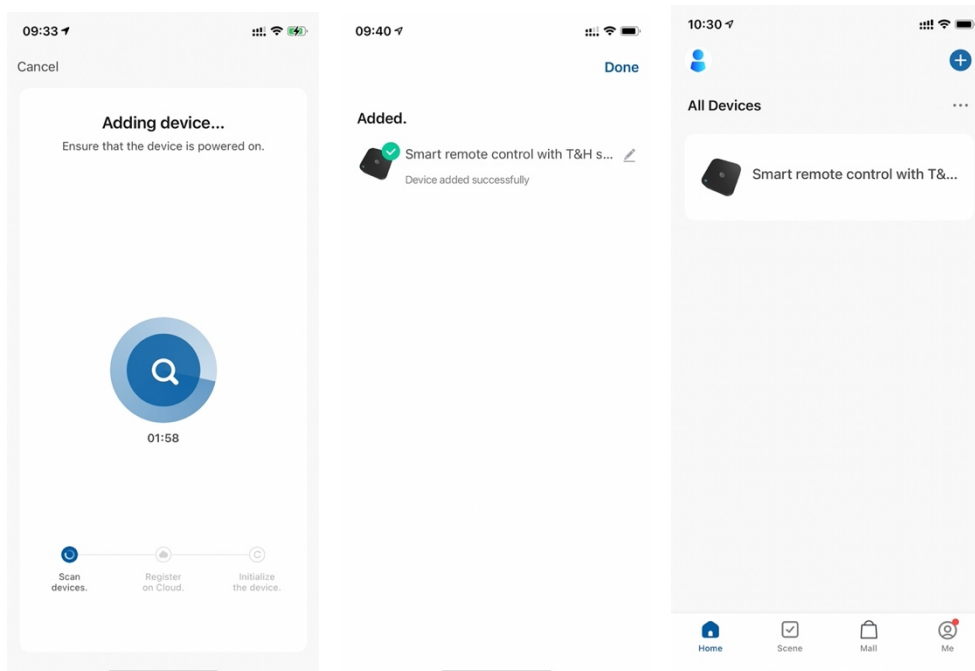
3. Connect your mobile to Wi-Fi 2.4GHz, click “+” or “Add Device” of homepage, then select “IR Control” and “IR Remote Control with T&H”. After that choose Wi-Fi and fill in password.



4. Read the instruction on application and follow what to do. Then press next.



5. Application will add the device then you can use Smart IR Remote control on T3 Smart application to control other product at home.



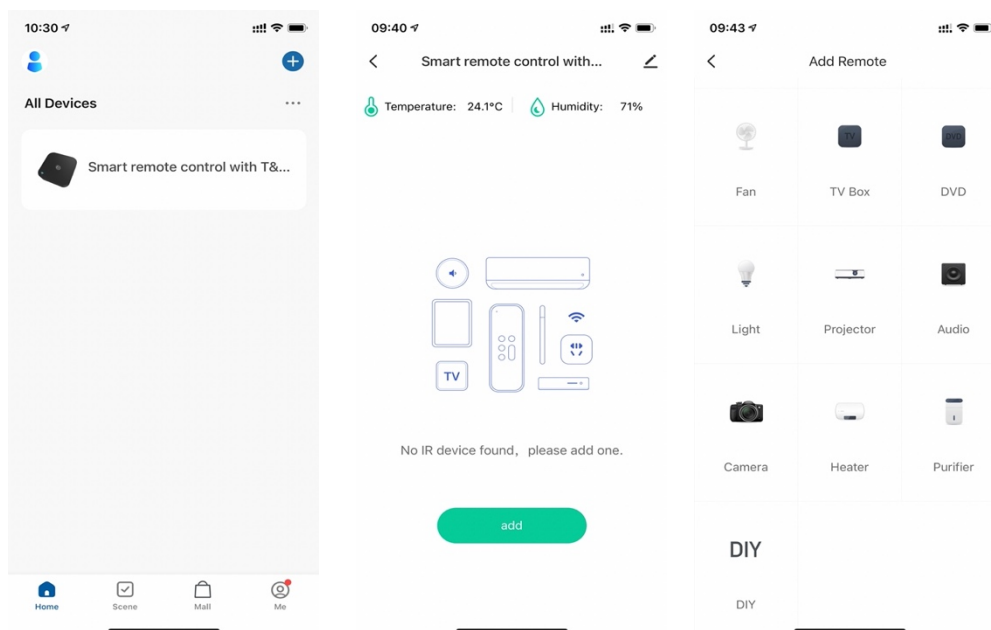
## Caution during connecting product with Application

1) If your Wi-Fi router only open 2.4GHz, enter the Wi-Fi password, if the LED indicator is not blinking rapidly, hold the reset button for about 5 seconds till indicator blink quickly, it will connect to Wi-Fi network automatically. After configuration done, add the IR devices you want to control.

2) If your Wi-Fi router open both 2.4GHz and 5GHz with the same name, enter Wi-Fi password, please select “AP Mode”, hold the reset button for about 5 seconds till LED indicator blink slowly, connect your mobile to the device’s hotspot: “SmartLife-XXXX”, then click to return to App interface, it will connect to Wi-Fi router automatically, configuration complete.

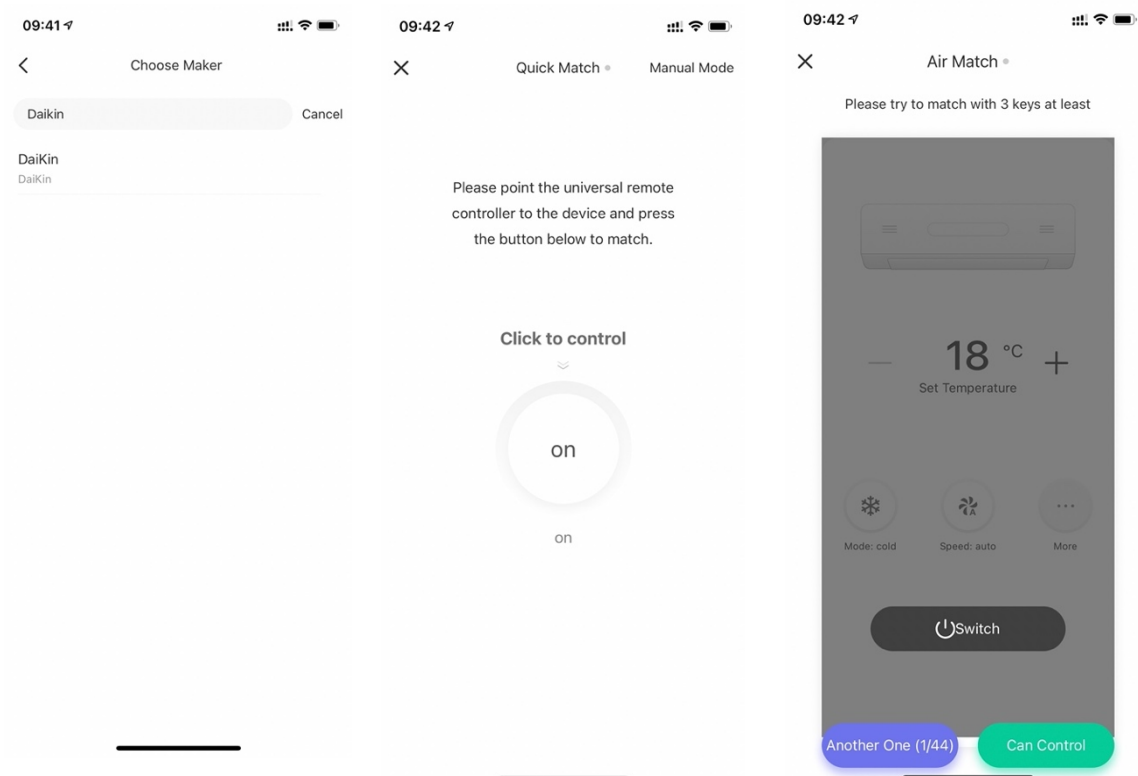
## ◇ How to use Application

1. Tap “Smart IR”, then click “Add”, select the device and its brand you need control, you can click “DIY” to customize the product that not in the list.



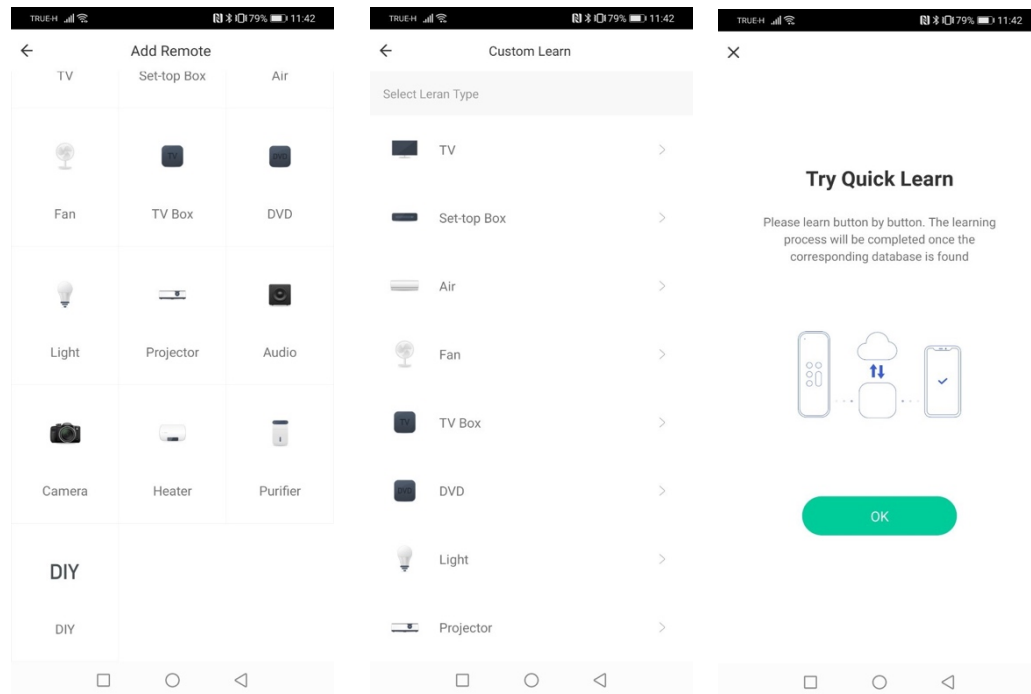


- Create remote button by using “Quick Match” or “Manual mode”. Try to match at least 3 buttons to check if the device reacts properly, if yes, then match completed, you can control the device. If you added the same device type with the same brand in one room, please edit the device with different names to avoid control confusion.

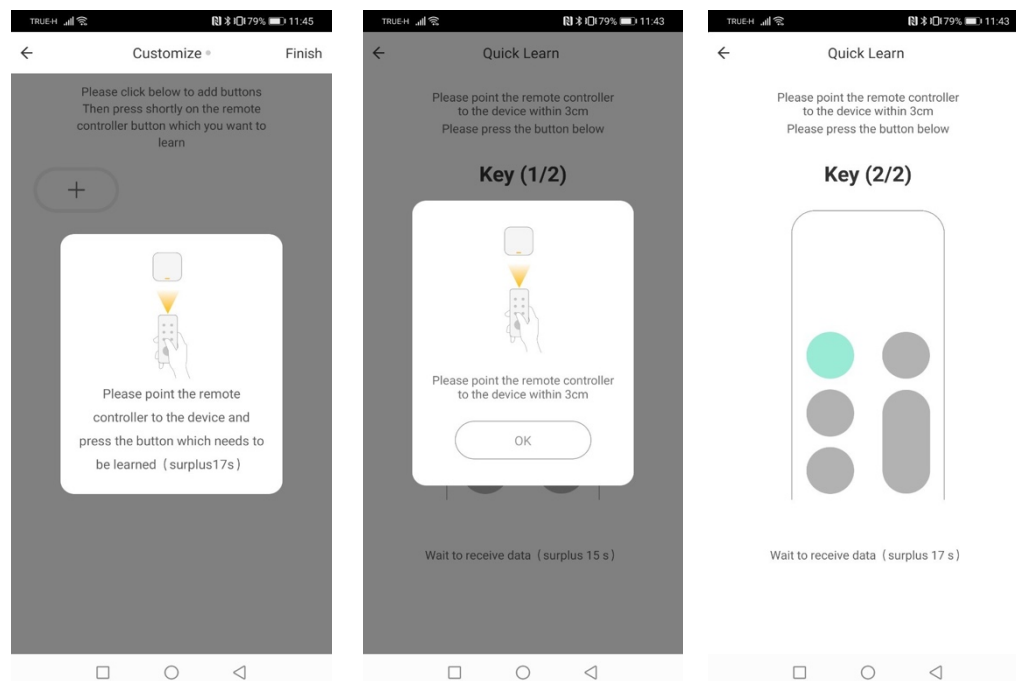


2. If a remote control for an electric device can not be found in the existing brand library, you can copy the buttons and enable them to control the devices. you can choose “DIY” to learn the buttons of other brands’ remote control. It supports TV, TV box, Set-top box, fan, etc.

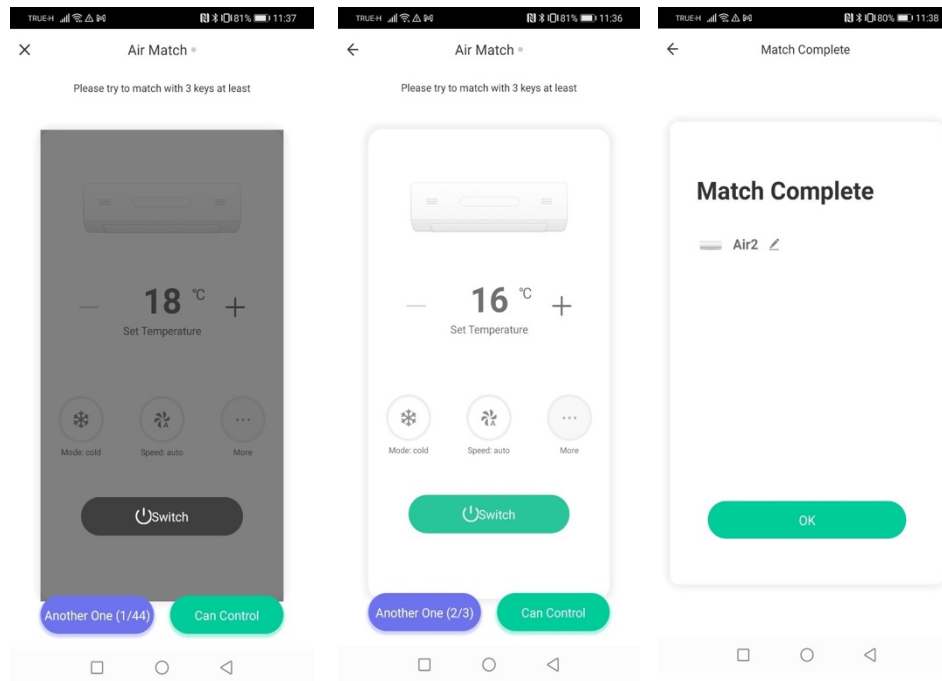
- Click “Add” then select “DIY” and choose the product after that follow instruction in Try Quick Learn.



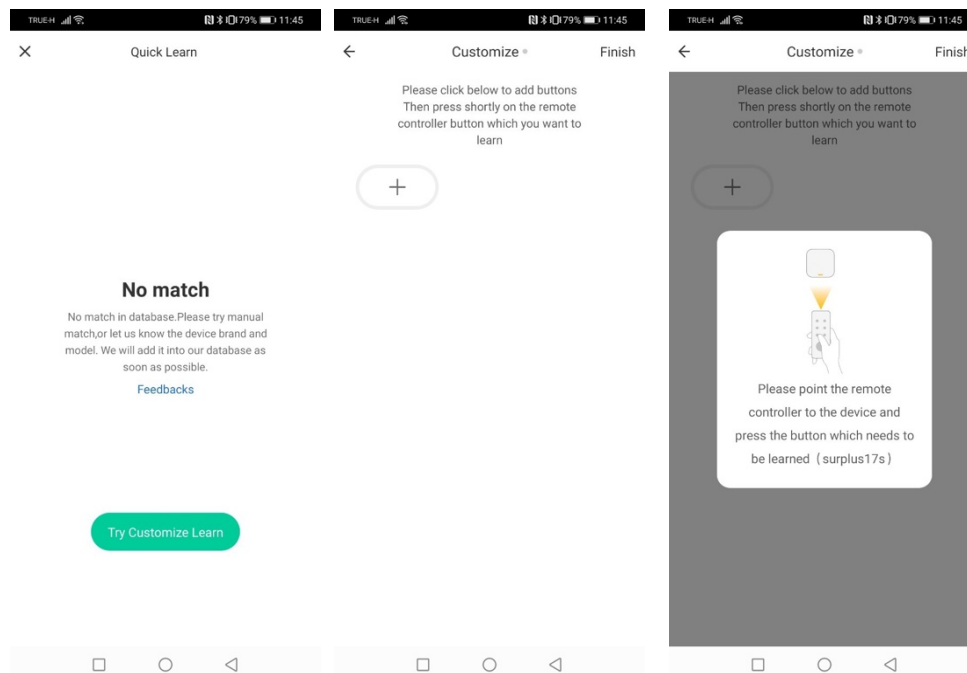
- Point the remote controller to IR remote and press the button which needs to copy.



3. After a button is copied successfully, press it to check whether it works properly, you can choose to click “Finish” or continue to copy other buttons.



4. If copying the button is fail you can Try Customize Learn.



- You can click “+” to continue to copy other buttons or click “Finish”

